



BABCOCK
& WILCOX

COMPANY OVERVIEW

MAY 31, 2023



SAFE HARBOR STATEMENT

B&W Enterprises cautions that this presentation contains forward-looking statements within the meaning of federal securities laws. All statements other than statements of historical or current fact included in this presentation are forward-looking statements, including, without limitation, statements relating to the company's business outlook and expected financial performance, including adjusted EBITDA and sales targets, expectations regarding future growth, expansion and profitability, as well as statements about B&W's future pipeline of new projects and business within its Renewable, Environmental and Thermal operating segments and their impact on future shareholder value. These forward-looking statements are based on management's current expectations and involve a number of risks and uncertainties, including, among other things, the impact of global macroeconomic conditions, including inflation and volatility in the capital markets; the impact of the ongoing conflict in Ukraine; our ability to integrate acquired businesses and the impact of those acquired businesses on our cash flows, results of operations and financial condition, including our recent acquisitions of Babcock & Wilcox Solar Energy, Inc. ("Babcock & Wilcox Solar"), formerly known as Fosler Construction Company Inc. and/or Fosler, Babcock & Wilcox Renewable Service A/S, formerly known as VODA A/S ("VODA"), Fossil Power Systems, Inc. ("FPS"), Optimus Industries, LLC ("Optimus") and certain assets of Hamon Holdings Corporation ("Hamon"); our recognition of any asset impairments as a result of any decline in the value of our assets or our efforts to dispose of any assets in the future; our ability to obtain and maintain sufficient financing to provide liquidity to meet our business objectives, surety bonds, letters of credit and similar financing; our ability to comply with the requirements of, and to service the indebtedness under, our debt facility agreements; our ability to pay dividends on our 7.75% Series A Cumulative Perpetual Preferred Stock; our ability to make interest payments on our 8.125% senior notes due 2026 and our 6.50% notes due 2026; the highly competitive nature of our businesses and our ability to win work, including identified project opportunities in our pipeline; general economic and business conditions, including changes in interest rates and currency exchange rates; cancellations of and adjustments to backlog and the resulting impact from using backlog as an indicator of future earnings; our ability to perform contracts on time and on budget, in accordance with the schedules and terms established by the applicable contracts with customers; failure by third-party subcontractors, partners or suppliers to perform their obligations on time and as specified; delays initiated by our customers; our ability to successfully resolve claims by vendors for goods and services provided and claims by customers for items under warranty; our ability to realize anticipated savings and operational benefits from our restructuring plans, and other cost-savings initiatives; our ability to successfully address productivity and schedule issues in our B&W Renewable, B&W Environmental and B&W Thermal segments; our ability to successfully partner with third parties to win and execute contracts within our B&W Environmental, B&W Renewable and B&W Thermal segments; changes in our effective tax rate and tax positions, including any limitation on our ability to use our net operating loss carryforwards and other tax assets; our ability to successfully manage research and development projects and costs, including our efforts to successfully develop and commercialize new technologies and products; the operating risks normally incident to our lines of business, including professional liability, product liability, warranty and other claims against us; difficulties we may encounter in obtaining regulatory or other necessary permits or approvals; changes in actuarial assumptions and market fluctuations that affect our net pension liabilities and income; our ability to successfully compete with current and future competitors; our ability to negotiate and maintain good relationships with labor unions; changes in pension and medical expenses associated with our retirement benefit programs; social, political, competitive and economic situations in foreign countries where we do business or seek new business; the impact of COVID-19 or other similar global health crises, and the other factors specified and set forth under "Risk Factors" in our periodic reports filed with the Securities and Exchange Commission, including, without limitation, the risks described in the Company's Annual Report on Form 10-K for the year ended December 31, 2022 under the caption "Risk Factors" and "Management's Discussion and Analysis of Financial Condition and Results of Operations" (as applicable). These factors should be considered carefully, and B&W Enterprises cautions you not to place undue reliance on these forward-looking statements, which speak only as of the date of this presentation, and undertakes no obligation to update or revise any forward-looking statement, except to the extent required by applicable law.

Non-GAAP Financial Measures

This presentation contains information regarding our adjusted EBITDA, which is a non-GAAP financial measure. Adjusted EBITDA on a consolidated basis is defined as the sum of the adjusted EBITDA for each of the segments, further adjusted for corporate allocations and research and development costs. At a segment level, adjusted EBITDA presented is consistent with the way our chief operating decision maker reviews the results of operations and makes strategic decisions about the business and is calculated as earnings before interest expense, tax, depreciation and amortization adjusted for items such as gains or losses arising from the sale of non-income producing assets, net pension benefits, restructuring costs, impairments, gains and losses on debt extinguishment, costs related to financial consulting, research and development costs and other costs that may not be directly controllable by segment management and are not allocated to the segment. We present consolidated Adjusted EBITDA because we believe it is useful to investors to help facilitate comparisons of our ongoing, operating performance before corporate overhead and other expenses not attributable to the operating performance of our revenue generating segments. In this presentation, we also present certain targets for our adjusted EBITDA in the future; these targets are not intended as guidance regarding how we believe the business will perform. We are unable to reconcile these targets to their GAAP counterparts without unreasonable effort and expense due to the aspirational nature of these targets.

WE'RE A GLOBAL ENERGY LEADER CREATING A BRIGHTER FUTURE

Providing high quality and innovative technologies since 1867

- From our first patent for a more efficient boiler to more than 17,000 patents since, we continue to drive innovation and change
- Today, we are a globally recognized technology leader and innovator at the forefront of the energy transition

Ensuring energy security for customers and the world

- Helping utility and industrial customers with the technical challenges of moving from current to future energy sources
- Delivering systems, parts and field services to help utility and industrial plants operate more effectively and efficiently

Making net-zero ambitions a reality today

- Our waste- and biomass-to-energy, carbon capture, hydrogen production and environmental technologies support the reduction of greenhouse gases, including CO₂ and methane, in an environmentally friendly way



OUR PROVEN, BEST-IN-CLASS POWER PRODUCTION TECHNOLOGIES SUPPORT THE CREATION OF A NET-ZERO FUTURE.

WE'RE HELPING CUSTOMERS CREATE CLEAN AND RELIABLE ENERGY

CLEAN ENERGY SOLUTIONS



SUPPORTING A CIRCULAR ECONOMY

Ecologically sound ways of using and recycling resources like biomass, municipal waste, and solar energy to create clean, renewable baseload power while reducing greenhouse gas emissions.



REDUCING THE IMPACT OF GREENHOUSE GAS EMISSIONS

Hydrogen production, carbon capture, ash handling, cooling systems, energy recovery and storage, and advanced emissions control solutions to help preserve the world's natural resources.

TRADITIONAL



CREATING RELIABLE AND EFFICIENT STEAM GENERATION

Providing boilers and related equipment, aftermarket parts, service and upgrades to help utilities and industries generate reliable thermal energy from a wide range of fuels and bridge the gap during the global transition to new energy sources.

DELIVERING VALUE
THROUGH
TECHNOLOGY-DRIVEN
PRODUCTS AND
SERVICES,
WITH CONTINUAL
PRODUCT
IMPROVEMENT AND
ROBUST R&D EFFORTS
TO SUPPORT
FUTURE ENERGY
NEEDS



THE FOUNDATION OF OUR COMPANY

Our Vision:

Advancing energy and environmental solutions that bring power and progress to our world.

Our Mission:

B&W delivers environmentally conscious, technology-driven solutions and services to energy and industrial customers worldwide – safely, ethically and as promised.

Our Core Values:

Safety • Integrity • Quality • Respect • Agility



WE'RE LEADING AND DRIVING CLEAN POWER SOLUTIONS



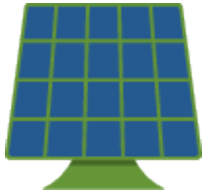
U.S. Inflation Reduction
Act increases the
investment into low carbon
intensity solutions and
hydrogen production



Energy trade
disruptions around the world
require increased use of
available natural resources and
reliable energy



Global drive toward
renewable and reusable
energy sources to limit
carbon and methane
emissions



E.U. Net-Zero Industry
Act accelerating investment
in solar, energy storage and
carbon capture



A strong utility and industrial
boiler installed base creates
stable aftermarket in the U.S.
and continued growth in
international power generation



Water scarcity and
environmental
regulations drive need for
custom cooling solutions

**B&W SUPPORTS
GLOBAL TRENDS
DRIVING
THE NEED FOR
SUSTAINABLE
ENERGY
CONVERSION
SOLUTIONS**



WE'RE DRIVING GROWTH, INNOVATION AND EXPANSION

OPPORTUNITY

Meet the global need for carbon reduction and greenhouse gas reduction with patented renewable waste-to-energy, biomass, hydrogen production, solar and carbon-capture solutions

INNOVATION

Provide best-in-class environmental technologies across a broad array of markets to meet growing environmental regulations and climate goals

GROWTH

Leverage tailwinds created by government tax incentives and global climate investment strategies to drive sales of innovative energy transition technologies and services

EXPANSION

Utilize experienced sales, service and business development teams in key international regions to serve the growing renewable, environmental and thermal markets



CORE GROWTH STRATEGIES FOCUSED ON DRIVING INNOVATIVE ENVIRONMENTAL, RENEWABLE AND ENERGY TRANSITION TECHNOLOGIES, GROWING AFTERMARKET SALES BY LEVERAGING THE INSTALLED BASE, AND EXPANDING INTERNATIONALLY IN KEY REGIONS

WE'RE LEVERAGING A VAST INSTALLED BASE AND PROVEN TECHNOLOGIES



- ▶ More than 500 waste-to-energy and biomass-to-energy units at 300+ facilities globally (consuming over 61 million tonnes of waste per year) and a leader in plant availability
- ▶ Serving utility, waste management, municipality and investment firm customers
- ▶ Installed more than 200 MW of utility- and community-scale solar projects in North America



- ▶ Large worldwide installed base of wet and dry scrubbers for SO_x reduction, particulate control equipment, NO_x reduction technologies, and mercury control systems to meet environmental regulations
- ▶ Flue gas pre-treatment technologies for use with CO₂ capture
- ▶ Nearly 2,000 wet, dry and hybrid cooling system units (10,000+ cells) installed globally



- ▶ More than 300 operating utility and industrial boiler units in the U.S. and nearly 200 operating utility and industrial boiler units across 40 countries around the world
- ▶ More than 5,000 industrial water-tube package boilers and other waste heat recovery products installed in a variety of facilities
- ▶ Average approximately 500,000 Boilermakers' construction manhours per year over last five years

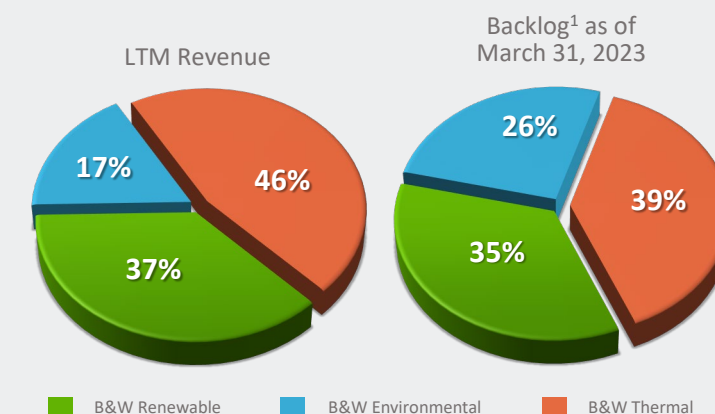
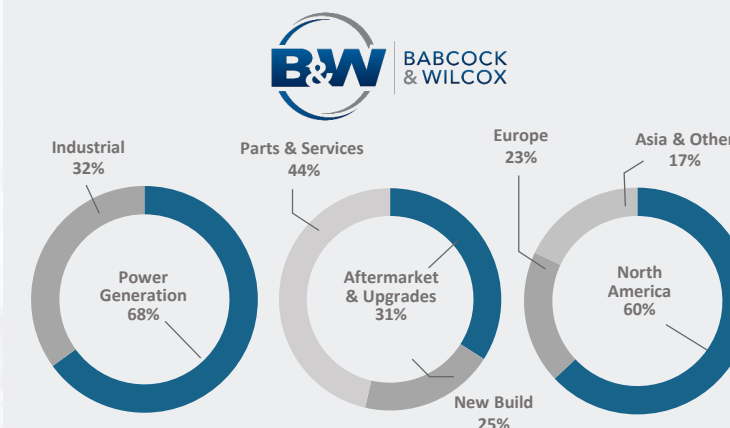
A VAST GLOBAL INSTALLATION OF B&W'S CORE TECHNOLOGIES AT UTILITY AND INDUSTRIAL PLANTS CREATE LARGE GROWTH OPPORTUNITIES FOR PARTS, SERVICES AND RETROFITS

BABCOCK & WILCOX PROFILE

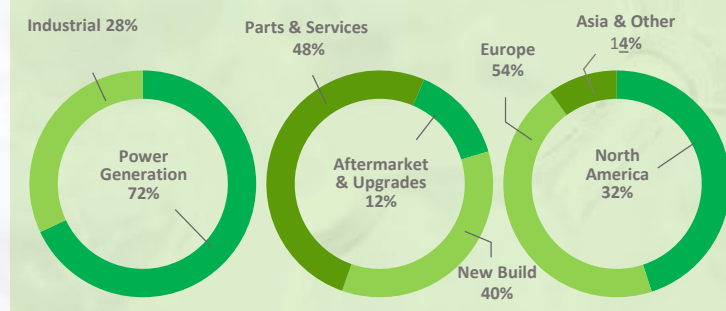
CORPORATE SNAPSHOT

Headquarters:	Akron OH, USA
Founded:	1867
Ownership:	Public (NYSE:BW)
Employees:	~2300
LTM Revenue March 2023:	~\$943M
LTM Adjusted EBITDA:	\$74.5M
2023 EBITDA Target:	\$100M to \$120M ²

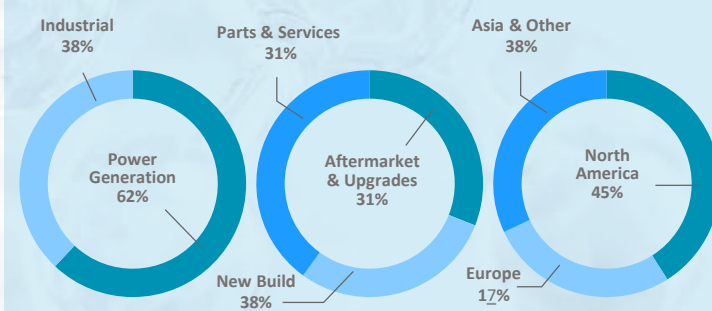
CONSOLIDATED



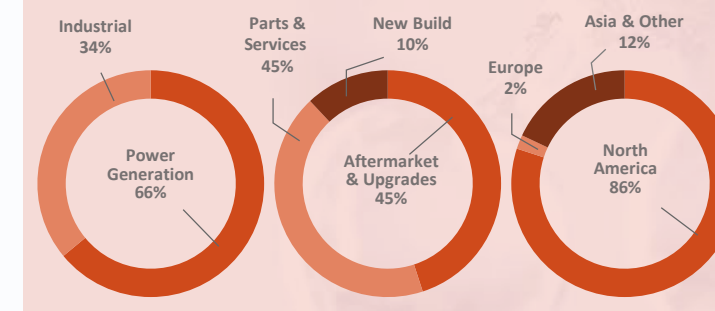
B&W RENEWABLE



B&W ENVIRONMENTAL



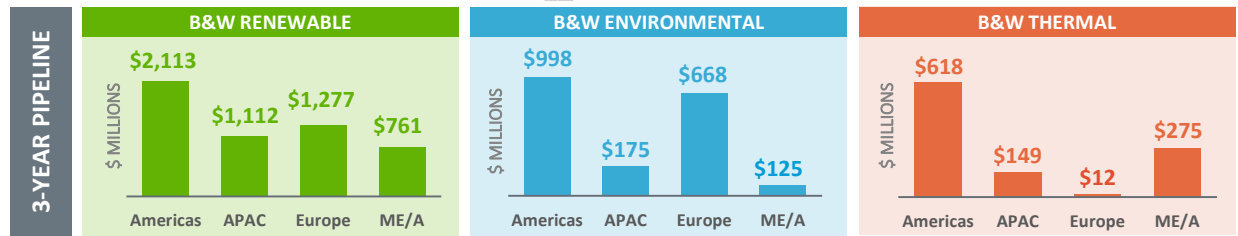
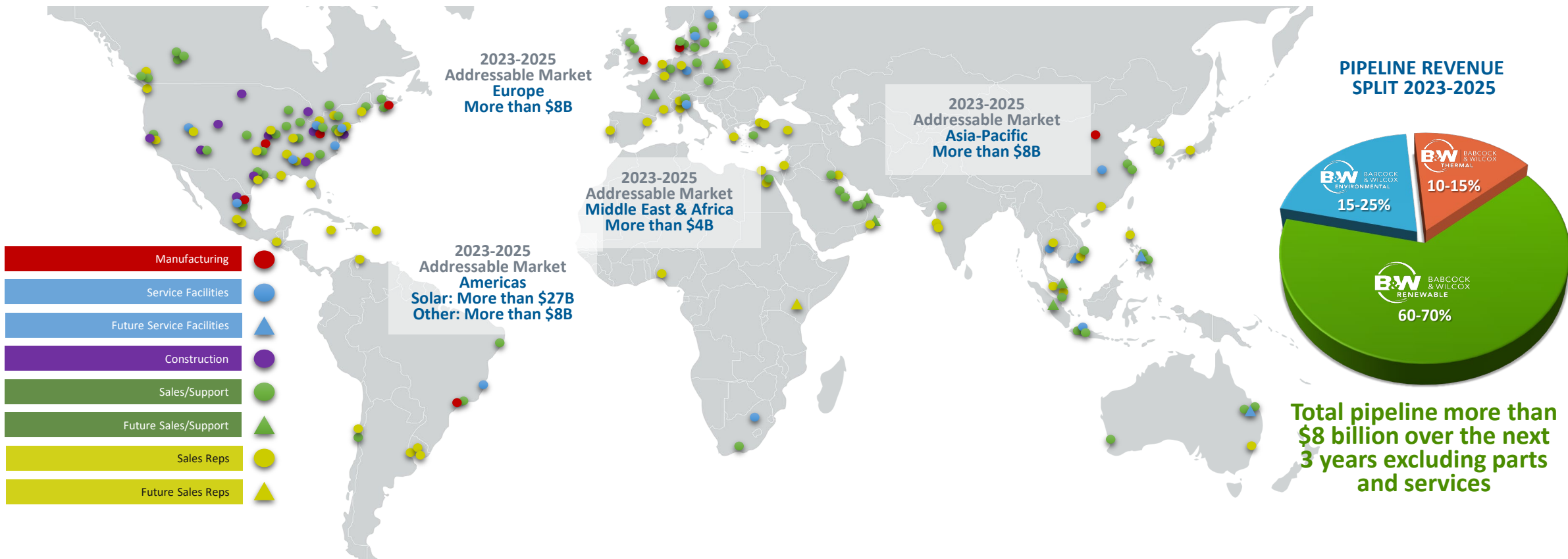
B&W THERMAL



Notes: All charts based on LTM March 31, 2023 revenues, unless otherwise noted. 1. Backlog does not include shorter lead-time parts and services. 2. The most comparable GAAP target is not available without unreasonable effort.

Disclaimer: B&W Enterprises cautions not to place undue reliance on any forward-looking statements, which speak only as of the date of this presentation and may be impacted by the risks described in our SEC reports including, without limitation, the impact of COVID-19 on us and the capital markets and global economic climate generally. We undertake no obligation to update or revise any forward-looking statement, except to the extent required by applicable law.

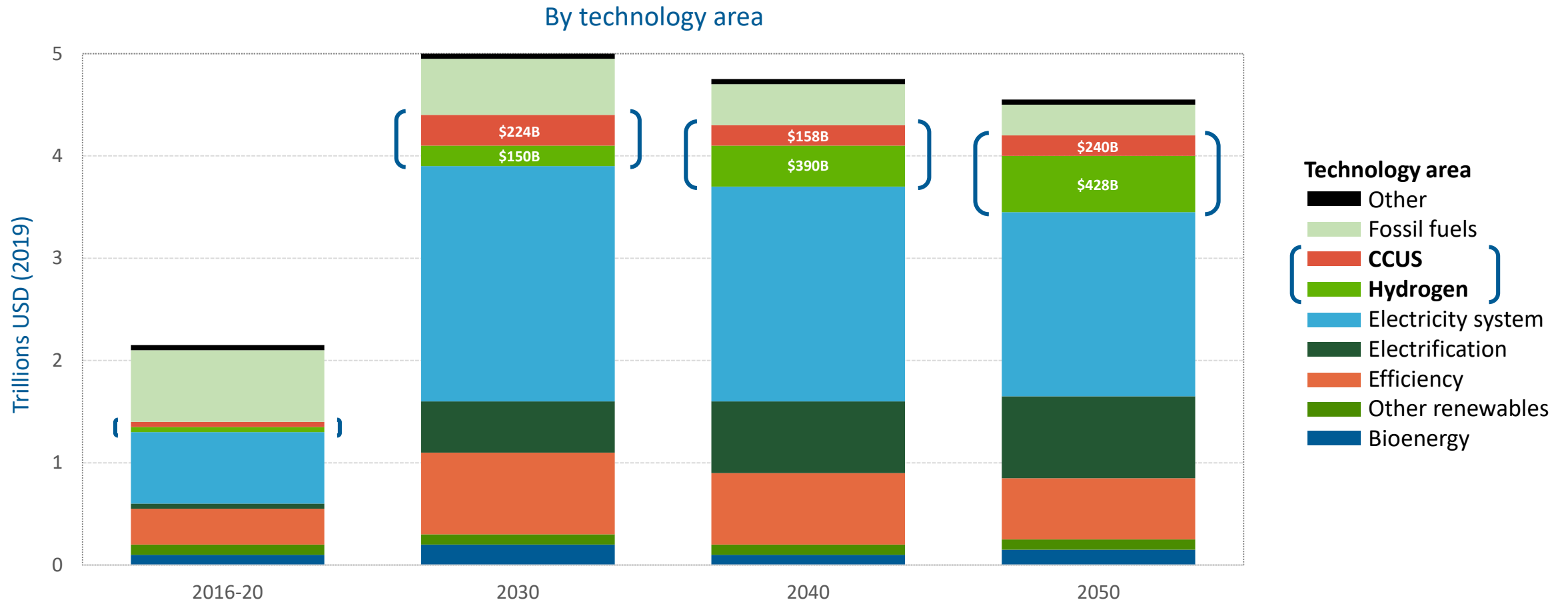
A SOLID PIPELINE OF GLOBAL OPPORTUNITIES



A WIDE FOOTPRINT AND ONGOING EXPANSION POSITIONS B&W TO LEVERAGE MARKET TRENDS AROUND THE WORLD

Disclaimer: B&W Enterprises cautions not to place undue reliance on any forward-looking statements, which speak only as of the date of this presentation and may be impacted by the risks described in our SEC reports including, without limitation, the impact of COVID-19 on us and the capital markets and global economic climate generally. We undertake no obligation to update or revise any forward-looking statement, except to the extent required by applicable law.

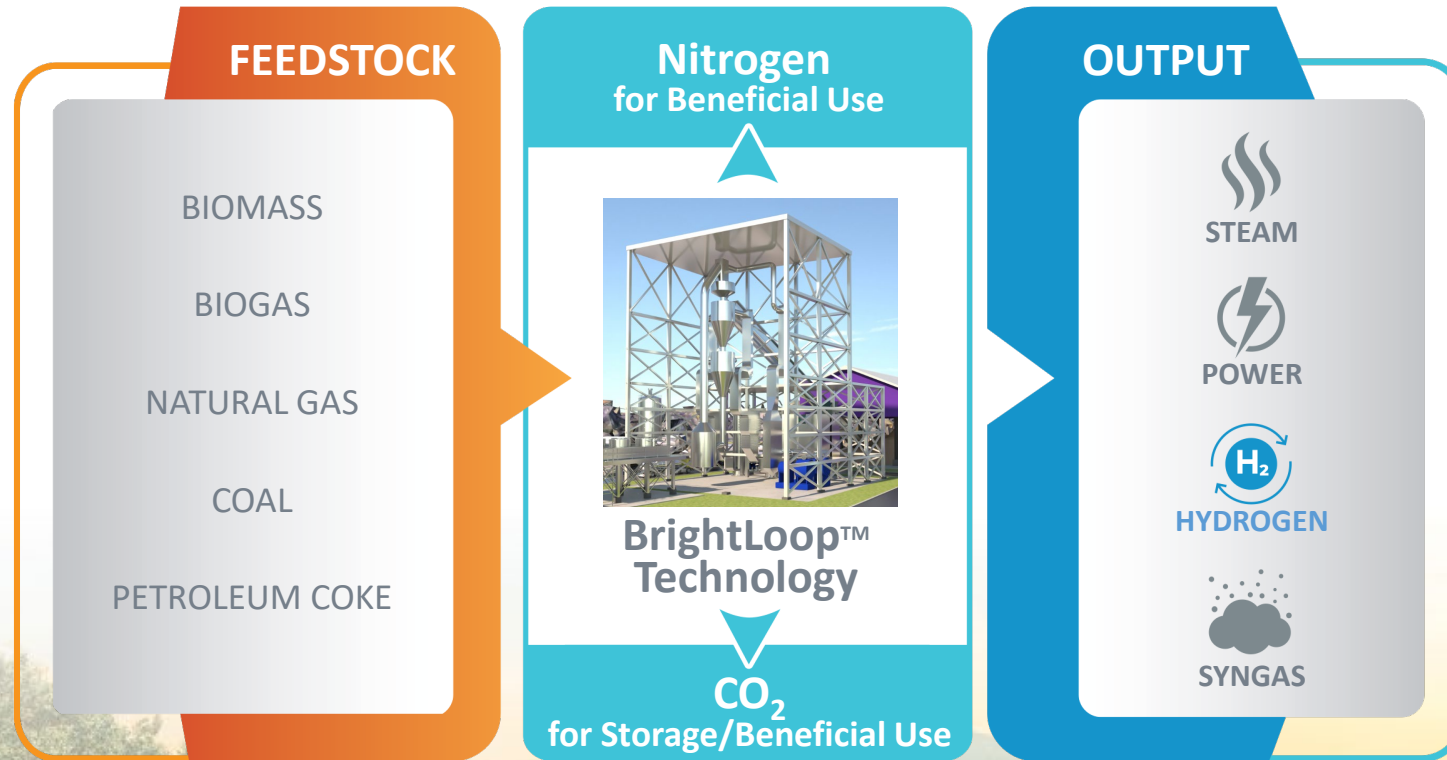
GLOBAL ANNUAL CAPITAL INVESTMENT IN CARBON CAPTURE AND HYDROGEN IS GROWING



ANNUAL AVERAGE CAPITAL INVESTMENT IN THE NET-ZERO EMISSIONS (NZE) SCENARIO

Source: IEA

BRIGHTLOOP™ HYDROGEN PRODUCTION



WHY BRIGHTLOOP?

- **Hydrogen from solid fuels** – can utilize a variety of solid or gaseous fuels as feedstock
- **High rate of carbon captured** – inherent CO₂ isolation without the need for expensive carbon capture equipment
- **Competitive hydrogen cost** – lower levelized cost of hydrogen when compared to other hydrogen production methods
- **Scalable for a range of applications** – accommodates both large and small applications

Novel chemical looping technology can isolate CO₂ while producing clean energy

BRIGHTLOOP™ HYDROGEN PRODUCTION PROGRESS

BRIGHTLOOP™ EVOLUTION

COMPLETED



Laboratory Scale

RESEARCH STAGE



Sub-Pilot with
The Ohio State University
and B&W
25 Kilowatts Thermal

SUB-PILOT SCALE



Steam & Hydrogen
25 Kilowatts Thermal

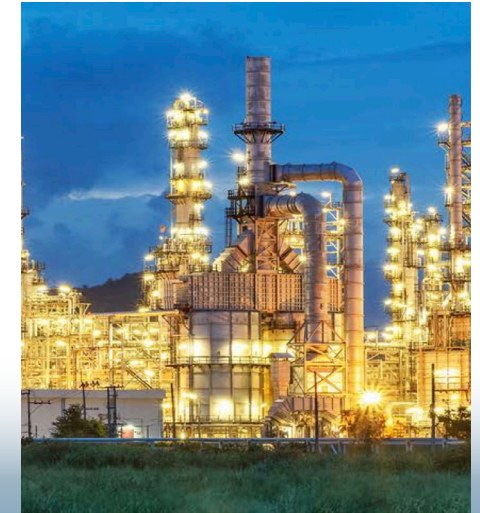
(National Carbon Capture
Center in Alabama)

PILOT SCALE

IN PROGRESS



INDUSTRIAL COMMERCIAL
2.5 to 25 Megawatts Thermal
1.5 to 15 Tons Per Day
Hydrogen Output



UTILITY COMMERCIAL
100 to 550 Megawatts Thermal
60 to 320 Tons Per Day
Hydrogen Output

1994 - 2004

2008

2014

2025

2028

BRIGHTLOOP™ – EXTENSIVE LEVEL OF EFFORT FOR OVER 20 YEARS

COAL DIRECT CHEMICAL LOOPING (CDCL)



2,000+ OPERATING HOURS

NATIONAL CARBON CAPTURE CENTER (NCCC)



1,000+ OPERATING HOURS

2009 CL
with OSU

2010 NCCC
Design & Construction

2010 NCCC
Testing

2012 – 2014 CDCL DOE
Techno-Economic Analysis

2016 – 2018 DOE
Pre-FEED CDCL

2022 - Present
Commercialization

THE OHIO STATE UNIVERSITY

TGA TESTING

500 **10,000**
TEST RUNS HOURS OF TESTING

3 Reactor SUB-PILOT

50 **1,000**
HOURS OF TESTING

BENCH SCALE

200 **5000+**
TEST RUNS HOURS OF TESTING



PARTICLE



Experts Trained

70
100
250

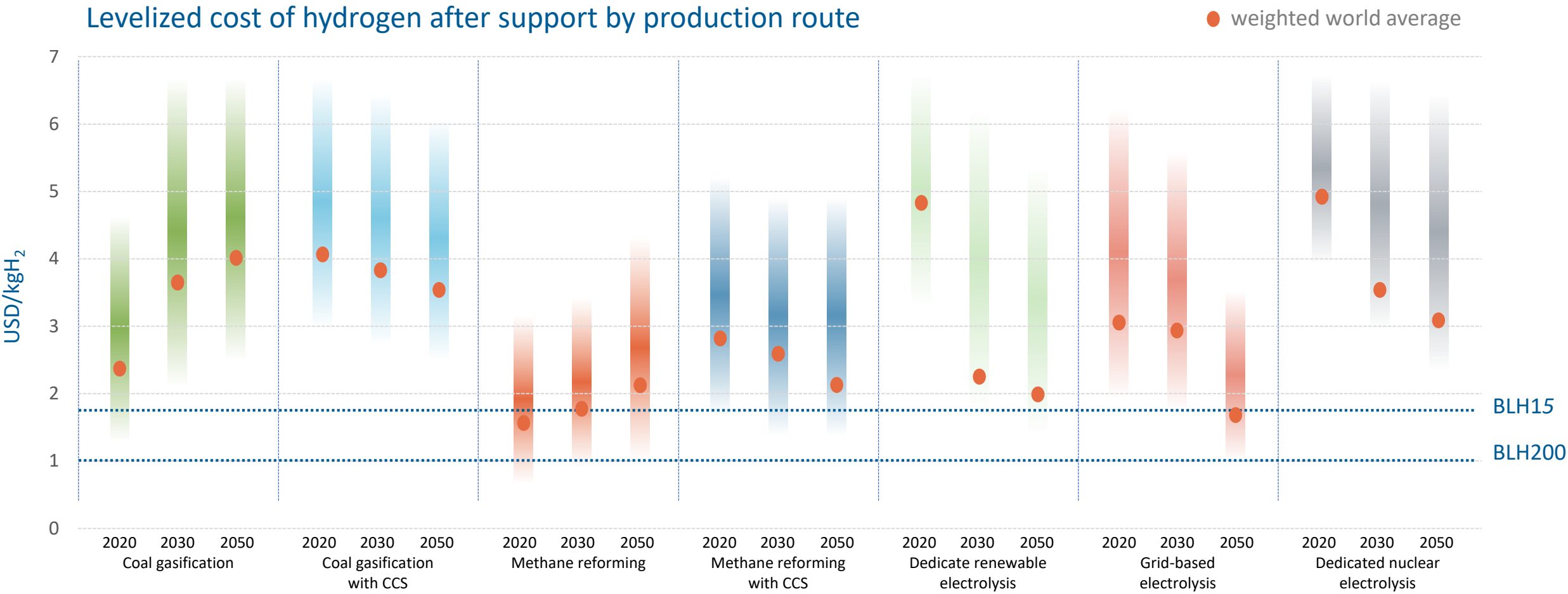
OSU CL
RESULTED PHDs
GRAD
STUDENTS
OTHER STUDENTS
AND STAFF

TOTAL INVESTMENT

\$275M+

DOE GRANTS – STATE GRANTS – OSU – B&W

HYDROGEN PRODUCTION AND COSTS

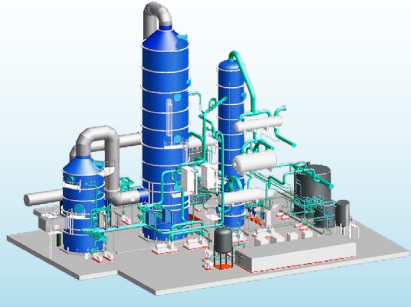


Note: BLH Projections based on \$1 / MMBTU feedstock; Source: DNV

GLOBAL LEADER IN CLEAN POWER PRODUCTION TECHNOLOGIES — OUR CLIMATEBRIGHT™ SUITE

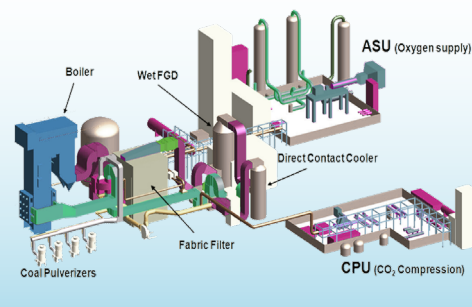
SolveBright™

POST-COMBUSTION CARBON CAPTURE



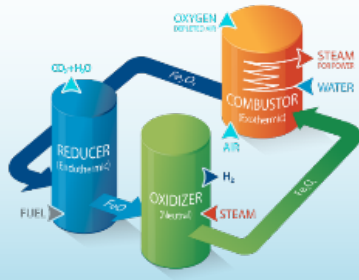
OxyBright™

OXYGEN-FUEL COMBUSTION



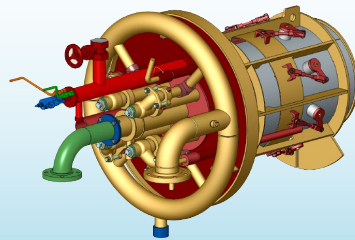
BrightLoop™

HYDROGEN PRODUCTION



BrightGen™

HYDROGEN COMBUSTION

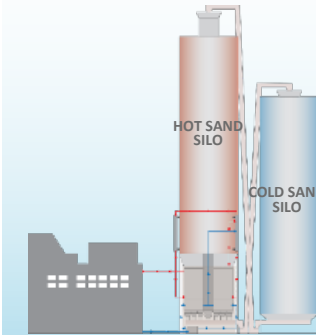


EMERGING TECHNOLOGIES

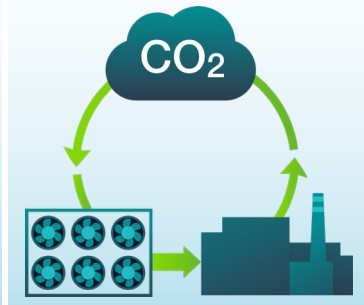
Long Duration Energy Storage



Green Steam



Direct Air Capture



- B&W is at the forefront of developing CO₂ capturing technologies
- Multiple technologies ready for commercial demonstration
- 93 active patents related to carbon capture technology
- Positioned to provide critical solutions to meet global climate goals

B&W'S PORTFOLIO OF CLEAN POWER PRODUCTION SOLUTIONS CONTINUES TO EVOLVE TO REACH CUSTOMERS AT ALL STAGES OF THEIR ENERGY TRANSITION.

INFLATION REDUCTION ACT FOR CLIMATEBRIGHT™

Clean Hydrogen Production Tax Credit (PTC): 45V

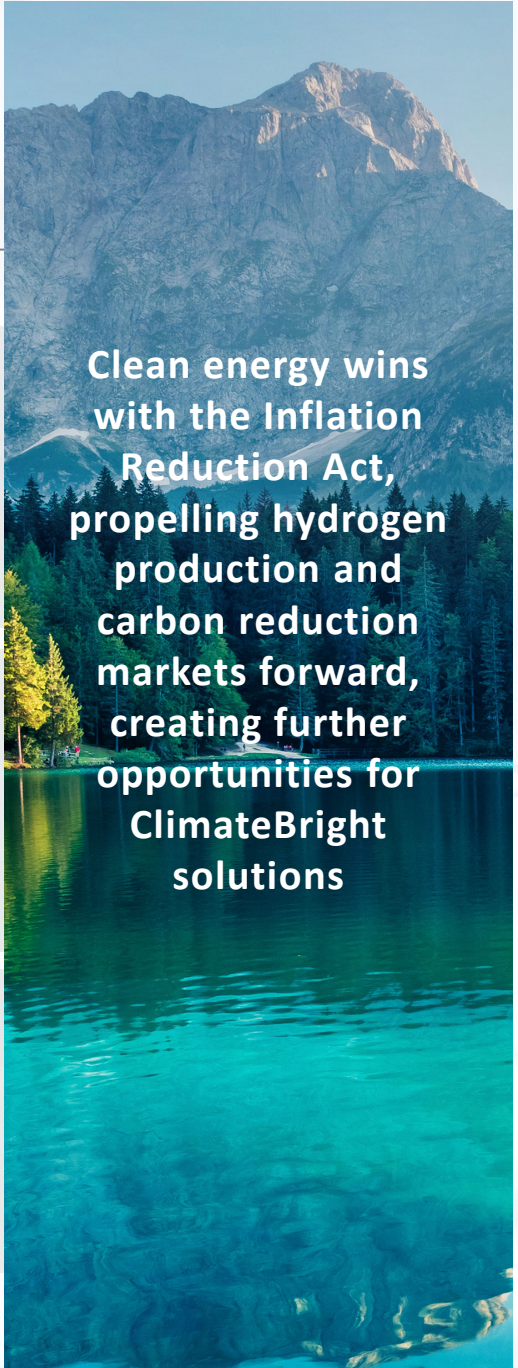
- New 10-year incentive for clean hydrogen production with four tiers and a maximum of 4 kilograms of CO2 equivalent per kilogram of hydrogen
- Green hydrogen awards: \$3/kg

Carbon Capture and Sequestration Tax Credit: 45Q

- Increases the tax credits, lowers the threshold to be applicable, and adds direct air capture making carbon capture affordable
- CO2 increases to \$85/ton and DAC increases to \$180/ton; 12-year term

Clean Electricity Investment Tax Credit (ITC): 48C

- New, tech-neutral ITC replaces Energy ITC after 2024, emissions-based and flexible between clean technologies
- Renewable energy offsets CapEx at 30%, with potential for multiple 10-20% bonuses



Clean energy wins with the Inflation Reduction Act, propelling hydrogen production and carbon reduction markets forward, creating further opportunities for ClimateBright solutions

B&W'S WASTE-TO-ENERGY TECHNOLOGY REDUCES METHANE EMISSIONS



- Methane has **84 times** the Global Warming Potential (GWP) of CO₂ⁱ
- **Annual additions to landfills** in the U.S.ⁱⁱ produce emissions equivalent to **10 million cars**
- **Landfills in the U.S.**ⁱⁱⁱ emit more than 330 million tons of 20-year basis GWP each year, roughly equal to **70 million cars**^{iv}
- Waste-to-Energy (WTE) avoids landfilling while producing **baseload clean energy**
- **B&W's state-of-the-art technology** has been installed in more than 500 units in more than 30 countries, including:
 - The most recent WTE facility in the U.S. (Palm Beach Renewable Energy Facility, Florida)
 - One of the world's largest waste treatment facilities in the world (Shenzhen East, China)



WTE TECHNOLOGIES

- Boiler/steam generation island
- DynaGrate® combustion grate
- Fuel handling systems
- Emissions control equipment

1 ton of waste in a **LANDFILL** emits **3.42 metric tons** of global warming potential



Landfill methane is **84 times** as potent as CO₂.

1 ton of waste in a **WASTE-TO-ENERGY FACILITY** emits **.001 metric tons** of global warming potential



Reduced to **.03%** of Landfill GWP

B&W IS ACTIVELY DEPLOYING TECHNOLOGY THAT CURBS THE GLOBAL WARMING IMPACT OF METHANE

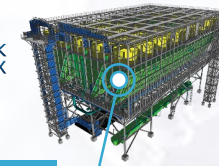
ⁱ Anthropogenic and Natural Radiative Forcing. In: Climate Change 2013: The Physical Science Basis. Contribution of Working Group I to the Fifth Assessment Report of the Intergovernmental Panel on Climate Change [Stocker, T.F., D. Qin, G.-K. Plattner, M. Tignor, S.K. Allen, J. Boschung, A. Nauels, Y. Xia, V. Bex and P.M. Midgley (eds.)]. Cambridge University Press, Cambridge, United Kingdom and New York, NY, USA. https://www.ipcc.ch/site/assets/uploads/2018/02/WG1AR5_Chapter08_FINAL.pdf; 20-year basis

ⁱⁱ EIA Biomass Explained: Waste-to-energy (Municipal Solid Waste), November 29, 2020 <https://www.eia.gov/energyexplained/biomass/waste-to-energy.php>

ⁱⁱⁱ EPA Landfill Methane Outreach Program: Project and Landfill Data by State; <https://www.epa.gov/lmop/project-and-landfill-data-state#:~:text=The%20LMOP%20Landfill%20and%20Landfill,more%20than%202%2C600%20MSW%20landfills> and EPA U.S. Greenhouse Gas Inventory 2020, Chapter 7: Waste, Section 7.1 Landfills (CRF Source Category 5A1)

^{iv} Equivalent car emissions calculated using EPA metric of 4.6 metric tons of CO₂ per year per passenger car

GLOBAL LEADER IN COMPREHENSIVE WASTE-TO-ENERGY SOLUTIONS



On-line boiler washing system

DynaFeeder® waste fuel feeder system

VoluMix® system for improved combustion

DynaGrate® combustion grate
DynaDischarger® ash removal

Energy storage systems

Dry cooling systems

Selective non-catalytic reduction (SNCR) NO_x control

Fabric filter baghouse

Wet scrubber with ADIOX® including energy recovery

Carbon capture solutions

Water-cooled wear zones and Inconel® corrosion protection



FIELD SERVICES



COMPONENT & SYSTEM UPGRADES



CONTROL SYSTEMS



REPLACEMENT & SPARE PARTS



OPERATION & MAINTENANCE



BIOENERGY WITH CARBON CAPTURE AND SEQUESTRATION (BECCS)

OxyBright with B&W's biomass-fired BFB boiler produces carbon negative electricity with a **-2,500gCO₂e/kWh carbon intensity**

OxyBright with B&W's WtE solution could produce carbon negative electricity with a **-1,000 gCO₂e/kWh carbon intensity**

Our negative carbon intensity (-2500 gCO₂e/kWh) is **nearly seven times more negative than the US grid is positive (+373 gCO₂e/kWh)**





FINANCIAL INFORMATION

CONSOLIDATED FINANCIAL SUMMARY

(\$ in millions)	Twelve Months Ended <u>March 31, 2023</u>	Twelve Months Ended <u>December 31, 2022</u>	Twelve Months Ended <u>December 31, 2021</u>
Revenue	\$ 942.8	\$ 889.8	\$ 723.4
Operating Income (loss)	\$ 3.9	\$ (4.2)	\$ 20.8
Net Income (loss)	\$ (30.3)	\$ (26.6)	\$ 31.5
Net income (loss) attributable to stockholders of common stock	\$ (42)	\$ (37.7)	\$ 21.8
Adjusted EBITDA	\$ 74.5	\$ 72.4	\$ 70.6
Adjusted EBITDA Margin %	7.9%	8.1%	9.8%

Note: 2020 Reported results include the recognition in Q3 2020 of a \$26.0 million non-recurring loss recovery settlement related to certain historical EPC loss contracts; figures may not be clerically accurate due to rounding; see SEC financial filings and/or slides in Appendix for reconciliation of non-GAAP measures; COVID-19 adversely impacted all segments in 2020 and 2021.

CAPITAL STRUCTURE

(\$ in millions)

As of March 31, 2023

CAPITALIZATION:

Total Debt	\$	351.7
-------------------	-----------	--------------

Cash, cash equivalents and restricted cash		91.1
--	--	------

Net Debt	\$	260.6
-----------------	-----------	--------------

TOTAL DEBT LEVERAGE:

LTM 3/31/2023 Adjusted EBITDA ⁽¹⁾		74.5
--	--	------

Net Leverage ⁽²⁾		3.5x
-----------------------------	--	------

Note: Figures may not be clerically accurate due to rounding.

(1) See SEC financial filings and/or slides in Appendix for reconciliation of non-GAAP measures.

(2) Net Debt compared to LTM 3/31/2023 Adjusted EBITDA.





APPENDIX

LEADERSHIP TEAM



**Chairman and
Chief Executive Officer**

Kenny Young



**Executive Vice President
and Chief Financial Officer**

Lou Salamone



**Executive Vice President and
Chief Operating Officer**

Jimmy B. Morgan



**Executive Vice President,
General Counsel and
Corporate Secretary**

John J. Dziewisz



**Chief Strategy and
Technology Officer**

Brandy Johnson



**Vice President,
Corporate Operations**

Gillianne Hetrick



**Senior Vice President,
Clean Energy**

Joe Buckler



**Senior Vice President,
Thermal**

Chris Riker



**Vice President,
Corporate Development**

Sarah Serafin

CORPORATE GOVERNANCE

BOARD OF DIRECTORS



**Chairman and
Chief Executive Officer**

Kenny Young



Henry Bartoli



Joseph Tato



Rebecca Stahl



Alan Howe



Philip Moeller

ADVISORY BOARD



Homaira Akbari



Rod O'Connor



Peter O'Keefe



Phillip Piddington



Eric Powell

ADJUSTED EBITDA RECONCILIATION ⁽¹⁾

(\$ in millions)	Twelve Months Ended March 31, 2023 ⁽⁴⁾	Twelve Months Ended December 31, 2022 ⁽³⁾	Twelve Months Ended Dec 31, 2021
Net income (loss)	\$ (30.4)	\$ (26.6)	\$31.5
Interest expense	52.9	50.8	41.4
Income tax (benefit) expense	10.3	11.0	(2.2)
Depreciation & amortization	23.2	24.0	18.3
EBITDA	56.0	59.2	89.0
Goodwill impairment	7.2	7.2	—
Benefit plans, net	(30.0)	(37.5)	(48.1)
Gain on sales, net	(1.6)	(2.6)	(14.0)
(Gain) loss on debt extinguishment	—	—	(6.5)
Stock compensation	10.6	8.7	10.5
Restructuring activities and business services transition costs	6.7	8.5	10.7
Advisory fees for settlement costs and liquidity planning	1.0	1.5	5.5
Litigation legal costs	5.2	10.7	4.9
Acquisition pursuit and related costs	4.8	5.5	4.8
Contract Disposal (O&M)	4.0	3.0	—
Product development ⁽²⁾	4.6	4.1	4.7
Foreign exchange	4.1	0.6	4.3
Financial advisory services	1.4	1.4	2.7
Contract step-up purchase price adjustment	—	1.7	—
Loss from business held for sale	—	—	0.5
Other – net	0.5	0.4	1.6
Income from discontinued operations	—	—	—
Adjusted EBITDA	\$74.5	\$72.4	\$70.6

- 1) Adjusted EBITDA is a non-GAAP Measure; figures may not be clerically accurate due to rounding.
- 2) Cost associated with development of commercially viable products that are ready to go to market.
- 3) Adjusted EBITDA for the twelve months ended December 31, 2022 include a \$7.0 million non-recurring gain on sale related to development rights of a future solar project that was sold.
- 4) Adjusted EBITDA for the twelve months ended March 31, 2023 include a \$7.0 million non-recurring gain on sale related to development rights of a future solar project that was sold.



KEY TECHNOLOGIES AND CAPABILITIES

KEY TECHNOLOGIES: STEAM GENERATION



Utility Boilers

High pressure, high efficiency, high capacity, low emissions

Fuel: Coal, oil, natural gas, multi-fuel



Natural Gas-Fired and Other Industrial Water-Tube and Fire-Tube Boilers

Bottom- or top-supported, shop- or field-assembled

Fuel: Natural gas, oil, CO, waste heat and gases



Heat Recovery Steam Generator Components

Pressure parts, casing, ducting, drums, housing and frames

Fuel: Waste heat and gases



Waste-to-Energy Boilers

Reduces dependency on landfills and reduces methane gas emissions

Fuel: MSW, RDF



Biomass-Fired Boilers

Carbon-neutral technology

Fuel: Wood, wood waste, straw, sludge



Process Recovery Boilers

Single-drum, industry-standard unit for improved mill operation

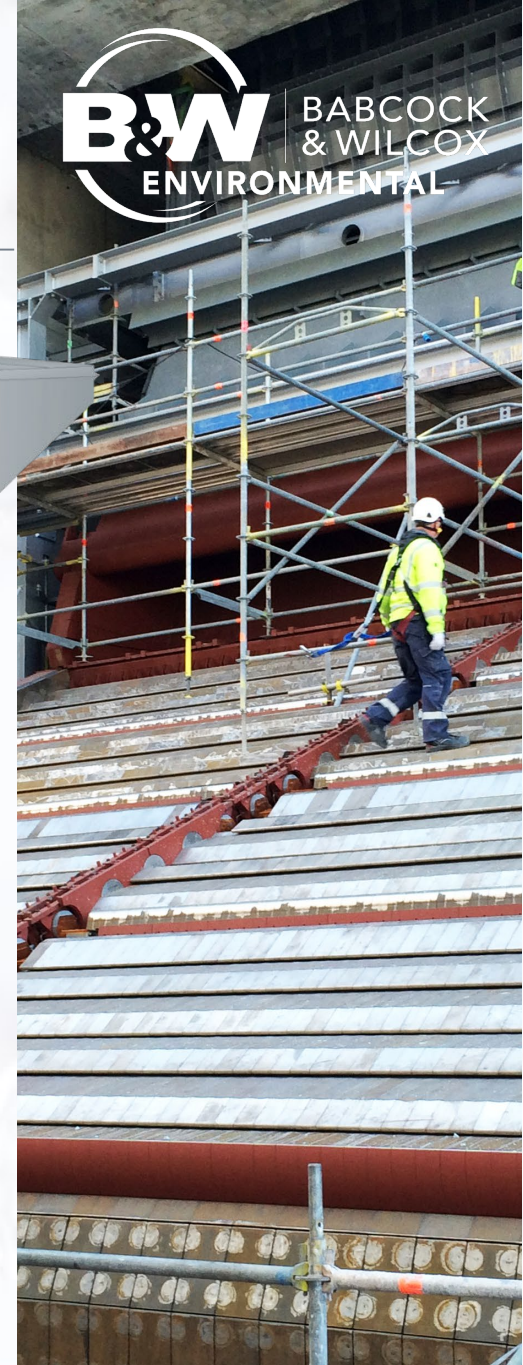
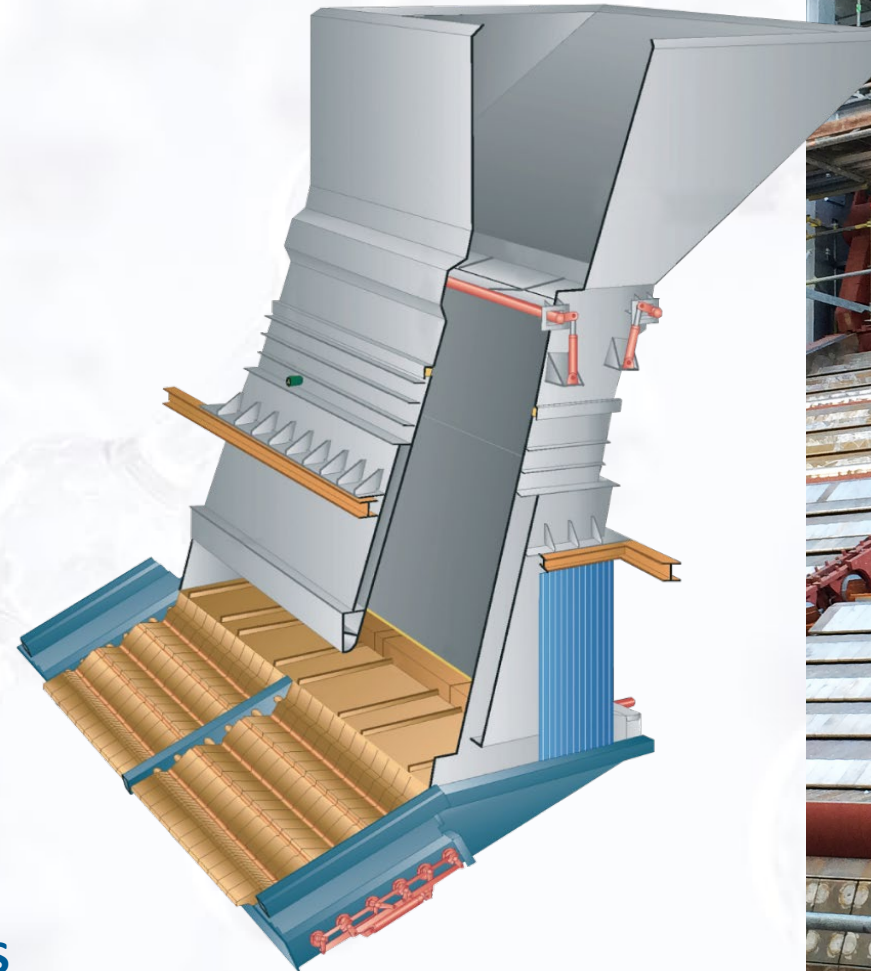
Fuel: Black liquor

KEY TECHNOLOGIES: RENEWABLE COMBUSTION GRATES

DYNAGRATE® COMBUSTION GRATE

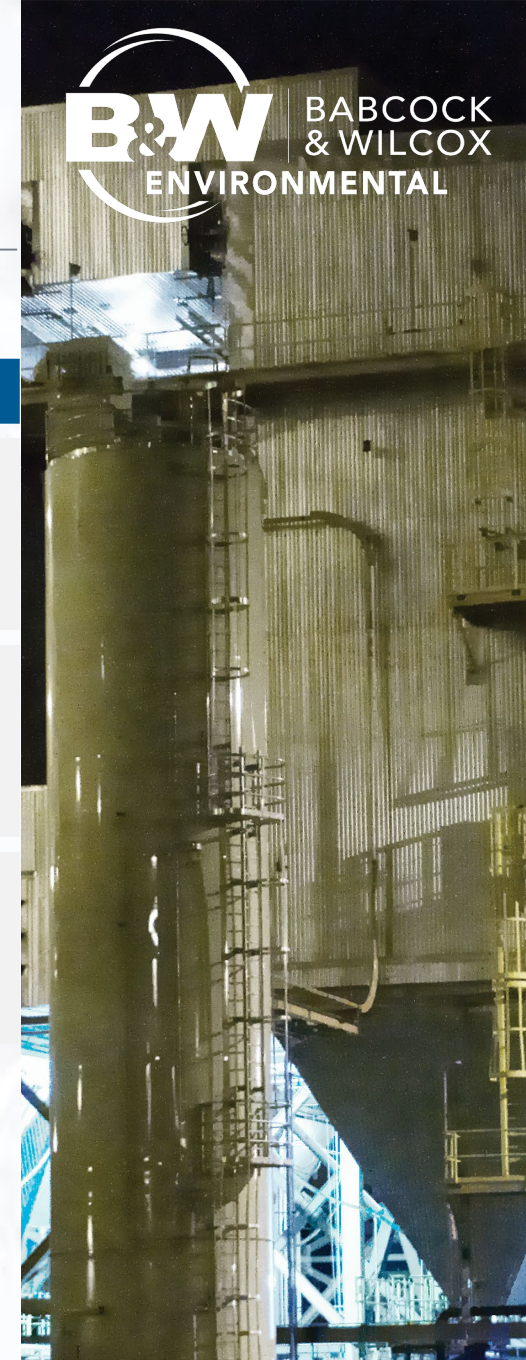
- Large installed base with diverse set of customers
- Grate design allows for high availability and long operational time, leading to reduced O&M cost
- High thermal efficiency and low emissions
- Fuel flexibility
- Factory assembled modules reduce field construction

**A MARKET LEADER WITH DIFFERENTIATING
TECHNOLOGY IN WASTE-TO-ENERGY SOLUTIONS**



KEY TECHNOLOGIES: EMISSIONS CONTROLS

PURPOSE	TECHNOLOGY SOLUTION	PURPOSE	TECHNOLOGY SOLUTION
Particulate Control	<ul style="list-style-type: none"> • Pulse Jet Fabric Filters (PJFF) / Baghouses • Wet and Dry Electrostatic Precipitators (ESPs) • Wet Particulate Scrubbers • Multiclone® Dust Collectors 	Mercury, Dioxins, Furans	<ul style="list-style-type: none"> • Powdered Activated Carbon Injection • Absorption Plus™, MercPlus™, Mitagent™ Additives • GMAB™ ADIOX® and MERCOX™ technologies
NO_x Control	<ul style="list-style-type: none"> • Selective Catalytic and Non-catalytic Reduction (SCR/SNCR) • Low NO_x Burners and Combustion Systems 	Wastewater Elimination	<ul style="list-style-type: none"> • Wastewater Evaporation System (WES) via Spray Drying • Air-Cooled Condensers
SO₂ / Acid Gas Control	<ul style="list-style-type: none"> • Wet or Seawater Flue Gas Desulfurization (FGD) Systems • Semi-dry FGDs (Spray Dry Absorbers, Circulating Dry Scrubbers) • Wet ESPs and Dry Sorbent Injection (DSI) 	Pre-treatment for Post-Combustion Carbon Capture	<ul style="list-style-type: none"> • Wet and Dry Scrubbers, Sorbent Injection, ESP Fabric Filters, SCRs • Complements SolveBright process, other post-combustion technologies
SO₃ / Acid Mist Control	<ul style="list-style-type: none"> • Wet ESPs • Dry Sorbent Injection (DSI) 		



KEY TECHNOLOGIES: FLUE GAS TREATMENT FOR CARBON CAPTURE

- To optimize carbon capture on solvent-based scrubbing technologies, reductions in various pollutants found in the incoming flue gas are required
- Our solutions include technologies for acid gases, particulate and acid mist, NO_x, mercury, and flue gas moisture



THE WORLDWIDE LEADER IN FLUE GAS PRE-TREATMENT TECHNOLOGIES FOR POST-COMBUSTION CARBON CAPTURE

300+
Wet Scrubber
Installations

90+
Dry Scrubber
Installations

260+
Wet ESP
Installations

490+
Dry ESP
Installations

35+
Flue Gas
Condensation
Installations

1000+
Fabric Filter
Installations

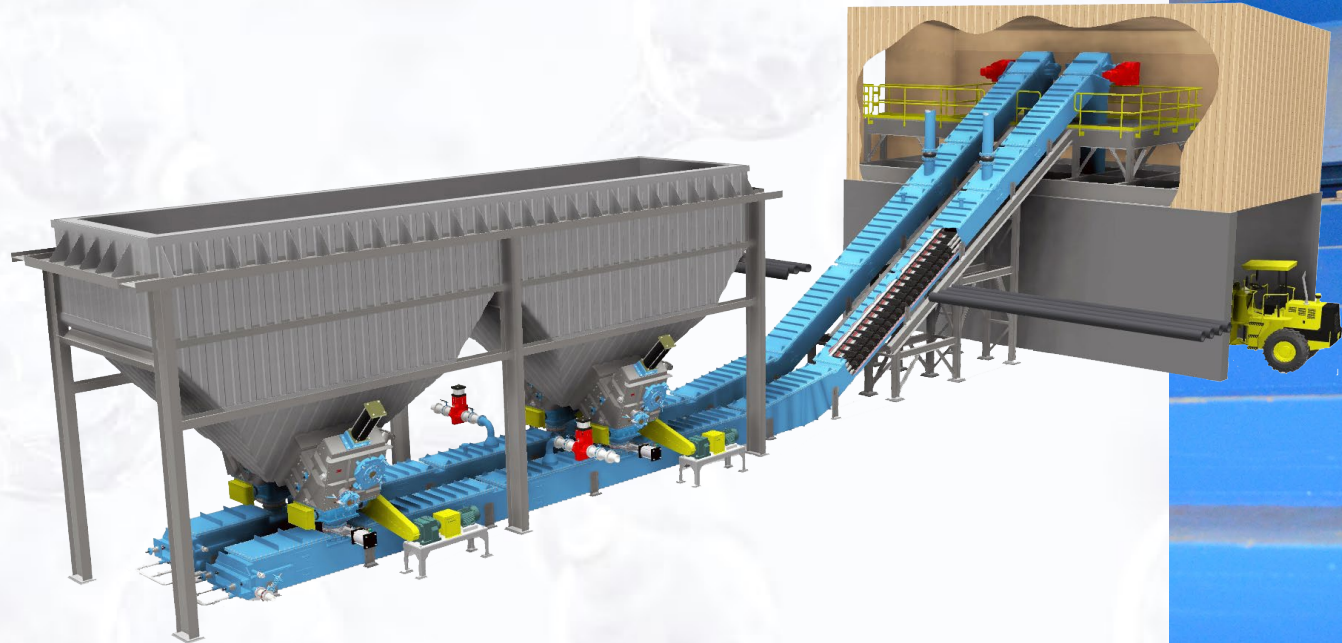
100+
SCR
Installations

35+
Sorbent Injection
Installations

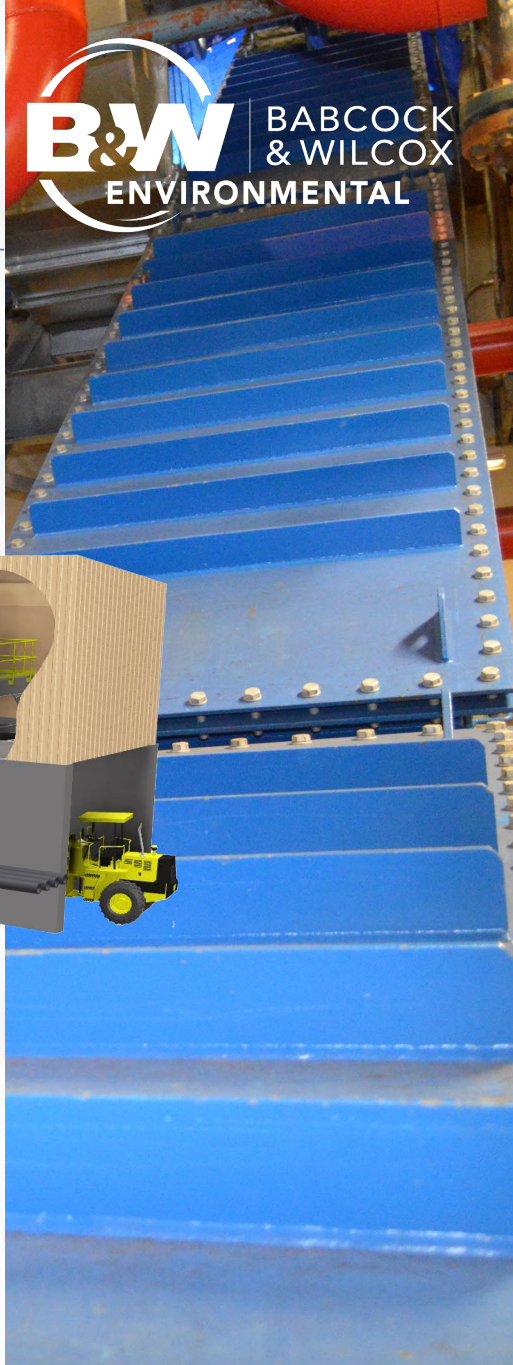
KEY TECHNOLOGIES: SUBMERGED GRIND CONVEYOR ASH HANDLING

Designated to meet current and future U.S. regulatory requirements for ash handling with:

- Lower equipment cost
- Lower installation cost
- Ability to utilize existing hoppers and gate valves
- No hopper modifications
- Short outage time
- Short lead time
- Available redundancy under the boiler
- Lower O&M costs



AN INNOVATIVE SOLUTION TO ELIMINATE ASH PONDS



KEY TECHNOLOGIES: COOLING SYSTEMS

WET



NATURAL DRAFT/HYPERBOLIC

Fanless design provides low power, noise and maintenance, as well as long operating lifecycle



MECHANICAL DRAFT

Counterflow for cost-effective thermal performance; crossflow for low energy consumption and operating costs

MATERIAL OPTIONS:

WOOD | CONCRETE | FIBER-REINFORCED POLYMER (FRP)

DRY



AIR-COOLED CONDENSERS

Water preservation technology customized for high-performance, long-life, low noise, corrosion-resistant applications



AIR FIN COOLERS

Cost-effective designs using embedded or wrapped tubes to meet required thermal, mechanical, noise, and space requirements



OPTIMIZATION SERVICES

Specialized services to maximize plant performance and minimize costs and maintenance

KEY CAPABILITIES: GLOBAL PARTS & SERVICE

UPGRADES & RETROFITS

Maintaining/improving plant operation:
Projects for extending the life of power, process and environmental equipment

REPLACEMENT PARTS

Supplying components for system reliability:
High-quality standard or custom-engineered pressure and non-pressure parts

OPTIMIZATION SYSTEMS

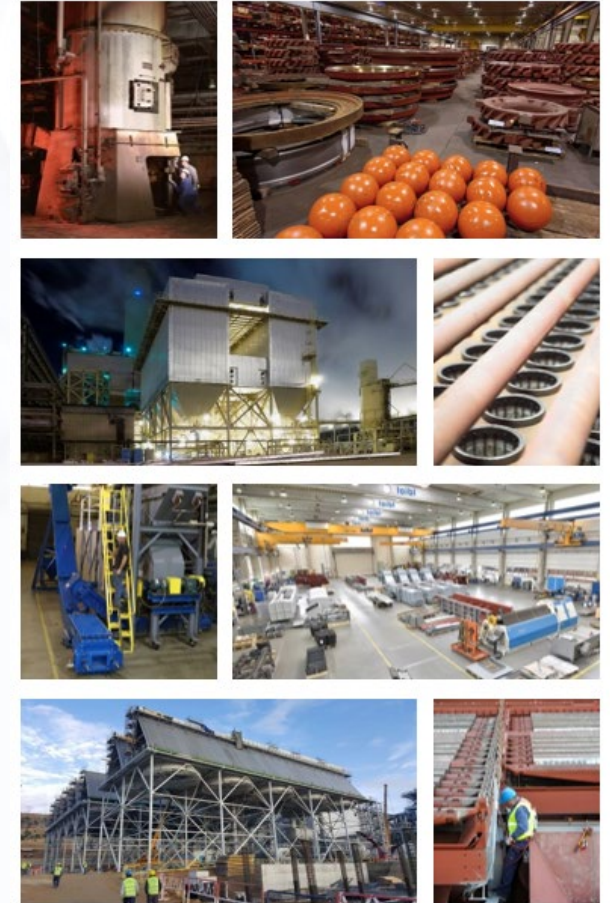
Enhancing efficiency with proven technology:
Diagnostic, monitoring, tuning and control systems for combustion, cleaning and cooling equipment

ENGINEERING SERVICES

Evaluating options for improved performance:
Expert people, tools and processes to measure, model, design, deliver, train, and project manage

CONSTRUCTION

Adding value through constructability:
Safe execution of new installation, retrofits, system maintenance/repair, plant modifications

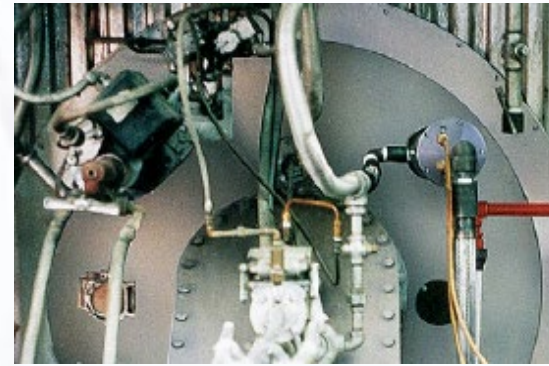
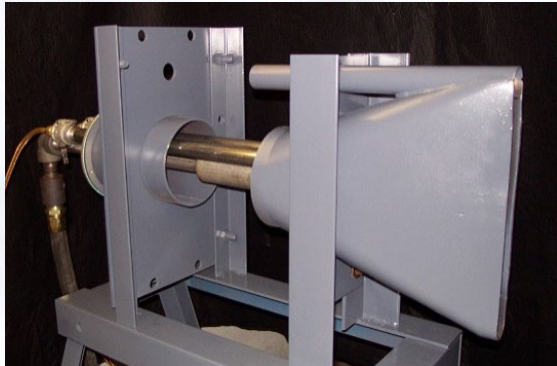


KEY TECHNOLOGIES: IGNITORS, FLAME SCANNERS AND CONTROLS

Designed for safety, reliability and fuel flexibility

- Natural gas conversions from oil- or coal-firing
- Alternative energy fuels such as hydrogen, bio-diesel, methanol, and bio-gas
- Burner management and controls for complete turnkey system capability
- Flame scanning capability can be effectively implemented on any industrial application
- Technologies can be utilized for new construction or retrofit projects
- Safety standards conforming to National Fire Protection Association (NFPA) classes

PROVEN TECHNOLOGIES WITH INSTALLATIONS IN MORE THAN 70 COUNTRIES, INCLUDING MORE THAN 11,000 IGNITORS



KEY CAPABILITIES: SOLAR INSTALLATION

ENGINEERING AND PROCUREMENT

- Project Cost Analysis
- Grid Integration and Interconnection
- Technical Evaluation
- Push-Pull Testing
- AC and DC Engineering
- Permitting and AHJ Permissions
- Logistics
- Strategic Procurement of Structural Components and Electrical BOE

BENEFITS OF A SOLAR ADDITION:

1. Powering up/down operations
2. Supplemental/plant energy source
3. Additional MW/GW output

INDUSTRY-LEADING EPC SERVICES



High efficiency. Low emissions.
Integrated solutions for clean power production.

CONSTRUCTION

- Subcontractor Management
- On-Site Construction Management
- Coordination and Supervision of Projects
- Utility Interconnections
- Quality and Commissioning Control
- Electrical and Structural QA/QC
- BOE



